

WATCH/WAERTOWER SINT JANSKLOOSTER

title	Watch tower / Watertower Sint Jans klooster
clients	BOEi, Vitens & Natuurmonumenten
projectteam	Bart Kellerhuis, Marnix van der Meer, Tom Leerkes, Mark Gerritsen
program	Transformation Watertower to watchtower
period	2007-2014

The water tower is situated in the middle of a protected nature reserve owned by Nature Monuments; De Wieden in the province Overijssel. BOEi, Vitens and Nature Monuments took up the plan to transform the tower to a watchtower. A spectacular 'route architecturale' will lead you up to a height of 45 m. Upstairs four windows give you a 360 degree view of De Wieden.



ZECC ARCHITECTEN BV TRACTIEWEG 41 3534 AP UTRECHT
THE NETHERLANDS T+31(0)30 273 1289 INFO@ZECC.NL WWW.ZECC.NL
BANK NL59 RABO 0394 6127 44 KVK 30 183 613 LID BNA

ZECC

GROUND ED ARCHITECTURE



The journey upstairs begins with a closed staircase that leads to the first floor on 4 m. height. Here you have arrived in a room that is 24 m. in height and houses a spectacle of old and new stairs. The new stairs that lead through the body of the water tower has been made of wood. This to on the one hand add a warm element that contrasts with the stark concrete walls of the tower. On the other hand it is a gesture to Nature Monuments by using a raw and unpolished natural material. By adding the new route complementary to the old existing one, spatial interaction is created. Where the old stairs led up alongside the walls, the new stairs zigzag across the tower to reinforce spatial perception.



zecc

GROUNDING ARCHITECTURE



The new stairs lead up to the level of the floor just below the immense concrete reservoir at 28 m. height.

From this level the original stairs went up through a tight space alongside the exterior of the tank. Now a steel winding stairs depart from the floor below the reservoir and goes right through the bottom of the empty tank. The stairs slowly wind up alongside the walls and intensifies the spatial perception of the reservoir, the heart of the tower. You feel feeble as a visitor and you get an impression of the huge quantity of water that used to provide water pressure for the entire region.

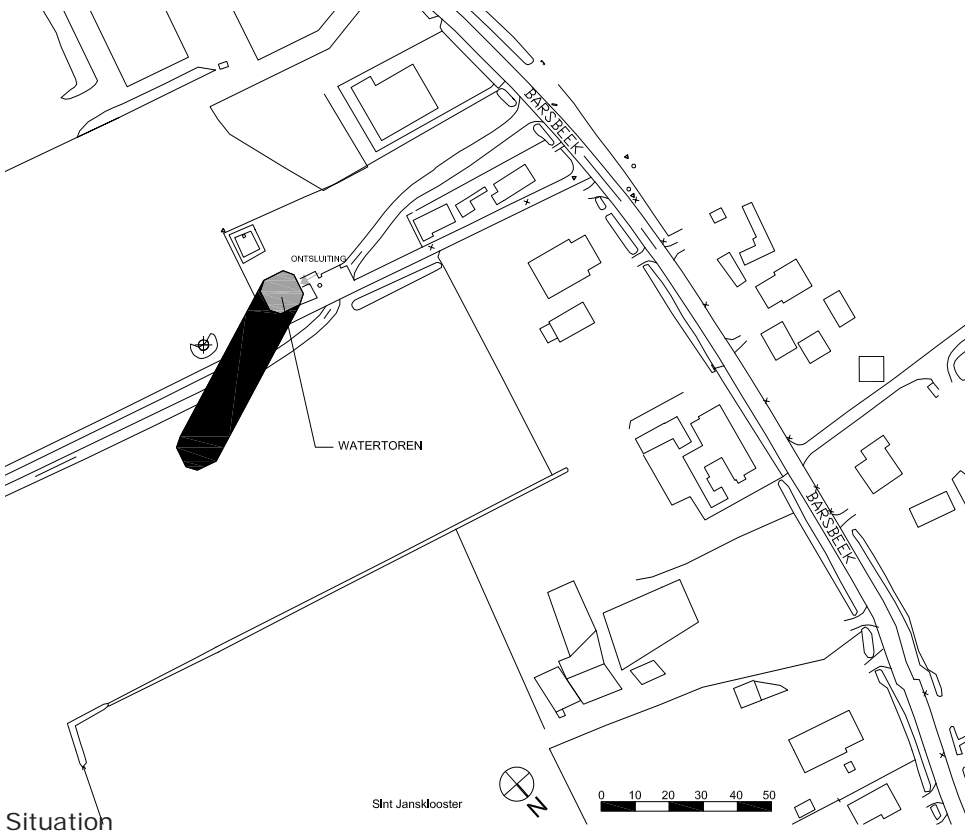
At the top of the tower you have reached the look-out post. The 'lid' of the tank has been partly removed in order to create steps to offer more of an overview for groups at the look-out post. The transparent raster floor makes you imagine yourself to be right in the middle of the tank. Alongside the four small existing windows four large ones have been added that complete the view of De Wieden. The public makes an exciting and multifaceted journey upstairs and is rewarded with a beautiful view.



zecc



Repurposing the water tower was an intensive track. Not in the least because of the procedural actions due to changing the zoning plan or eradicating any objections or doubts from the inhabitants of the surroundings, who often view the tower as their communal property. The water tower is a national monument, which made alterations to the exterior and interfering with the reservoir a difficult point. The strength of this plan lies in a combination of extreme restraint on the exterior and an architectural statement on the inside of the tower.





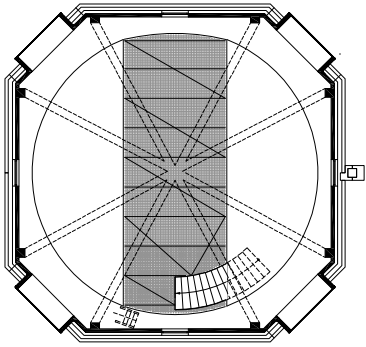
zecc

GROUNDING ARCHITECTURE

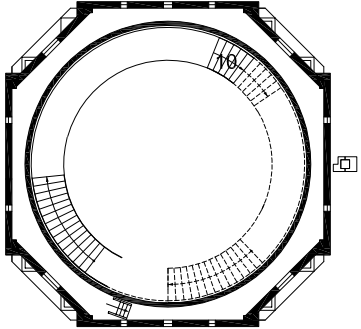


zecc

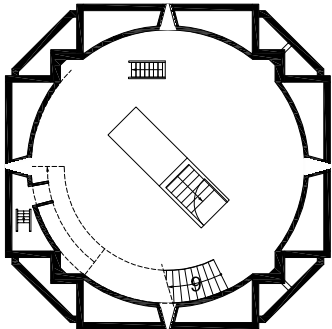
GROUNDING ARCHITECTURE



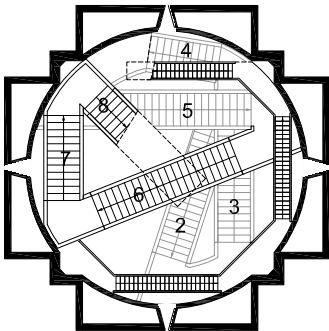
Vantage point



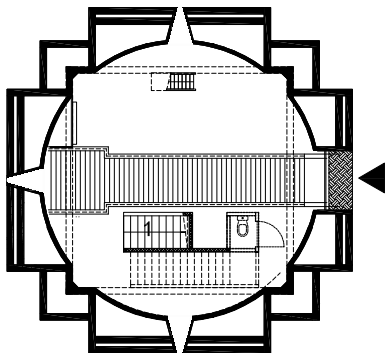
Water reservoir



Leaking floor

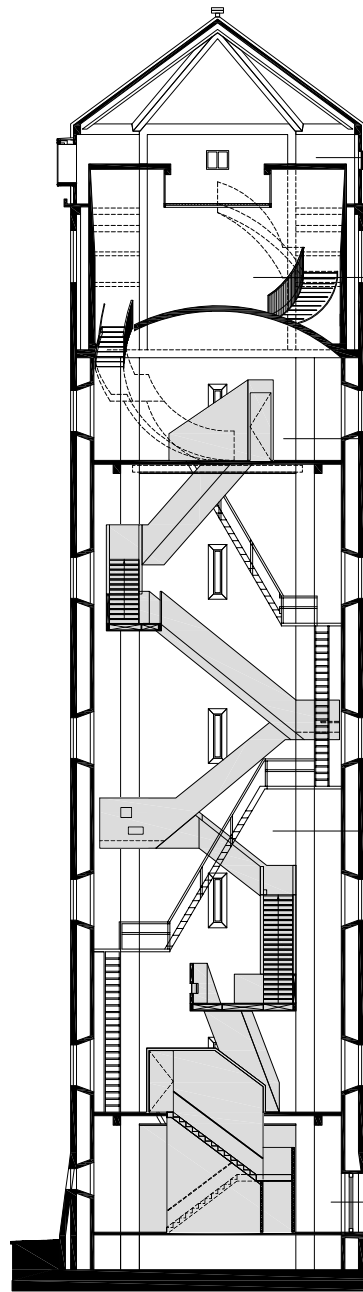
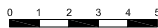


Shaft



Entrance

Floorplans



Section

Vantage point

Water reservoir

Leaking floor

Shaft





zecc

GROUNDING ARCHITECTURE

Zecc

Zecc Architecten BV
Tractieweg 41
3534 AP Utrecht
The Netherlands
T+31(0)30 273 1289
info@zecc.nl www.zecc.nl

Photographer

Stijn Poelstra
www.stijnstijl.nl

The logo for Zecc, featuring the word 'zecc' in a bold, lowercase, sans-serif font. The letters are black with a white outline, and the 'z' and 'c's are connected.