

REDESIGNATION OF POLYGONAL WORKSHOP

client	BOEi (redesignation/shell), EVE (constructional interior)
category	transformation
schedule	restaurant and multifunctional space for events
floor area	1.500 m ²
project team	Marnix van der Meer, Bart Kellerhuis, René de Korte, Niels Hartsuiker
building contractor	BAM
interior / styling	Dimitri Schouten / Hugo Interieurvormgeving
period	2015 - 2017
location	Tilburg, The Netherlands

The Polygonal Workshop's massive doors are open again! On commission for BOEi and hospitality establishment entrepreneur EVE, Zecc has designed the redesignation of this exceptional monument. In the olden days, locomotives were railed in for maintenance using an enormous turntable. Nowadays it is a publicly accessible building, right next to the railway station and the initiator for new developments on the northern side of the track. The workshop of glass and steel was transformed into a unique hospitality establishment with a restaurant and space for events with flexible layout.



ZECC ARCHITECTEN BV TRACTIEWEG 41 3534 AP UTRECHT
THE NETHERLANDS T+31(0)30 273 1289 INFO@ZECC.NL WWW.ZECC.NL
BANK NL59 RABO 0394 6127 44 KVK 30 183 613 LID BNA



GROUND ED ARCHITECTURE

DESIGN

A single organising object has been created in the large open Polygonal Workshop space. By making this volume black it becomes subordinate to the atmosphere that is appropriate for the hospitality sector. It has been positioned as such that the workshop can be used in two parts. One part can be used as a grand café/restaurant and the other part is completely open for multifunctional use. The object contains all the support facilities such as a kitchen, storeroom, sanitary facilities, dressing rooms and plant room. It allows the rest of the space to be as open as possible and unaffected. The volume has been kept detached from the façades and the continuous space remains perceivable. It is relatively large, but because of its stepped forms, large windows and rounding of corners, it is not as harsh and creates a beautiful contrast with the rigid architecture of glass and steel in the workshop.

Train tracks with crawl spaces in the hall have alternately been closed off with sections of wood and glass. They can still partially be used as track, which enables train carriage bases to be used to flexibly layout the space. The huge wall openings on the turntable side have been filled with steel fronts with outward-opening doors onto the terrace. The original roller shutters are still present, and these are used to close the façade in line with the original image. The entire façade has been fitted with new double glazed windows in the existing steel profiles. The choice was made not only to install secondary glazing, but also to give the glazing a putty-look to portray the original image as far as possible. The façade is interspersed with transparent glazing and frosted glass. The composition of frosted and transparent sections subtly reflects the function behind it. The frosted glass parts emphasize the coherence and contour of the façade. The transparent parts open up the building towards the city.

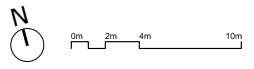
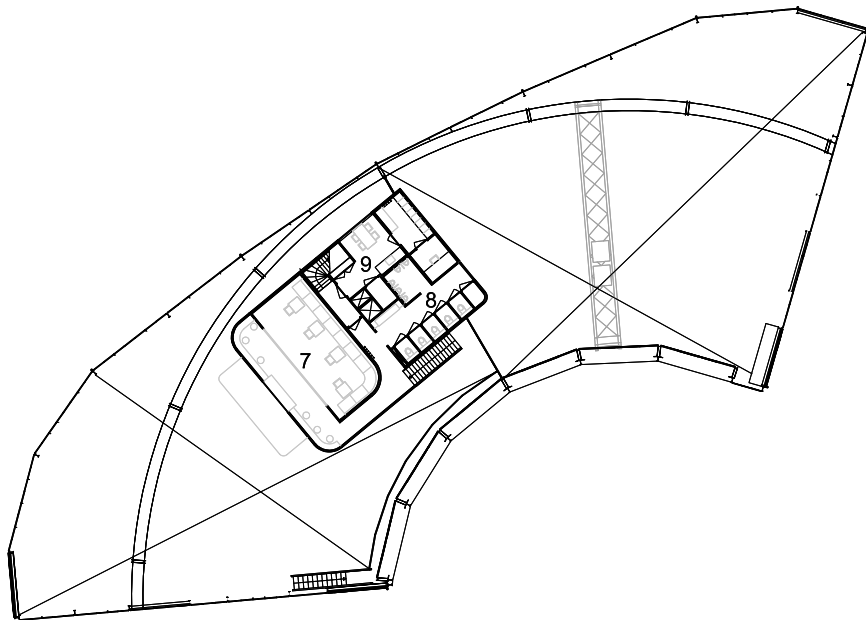
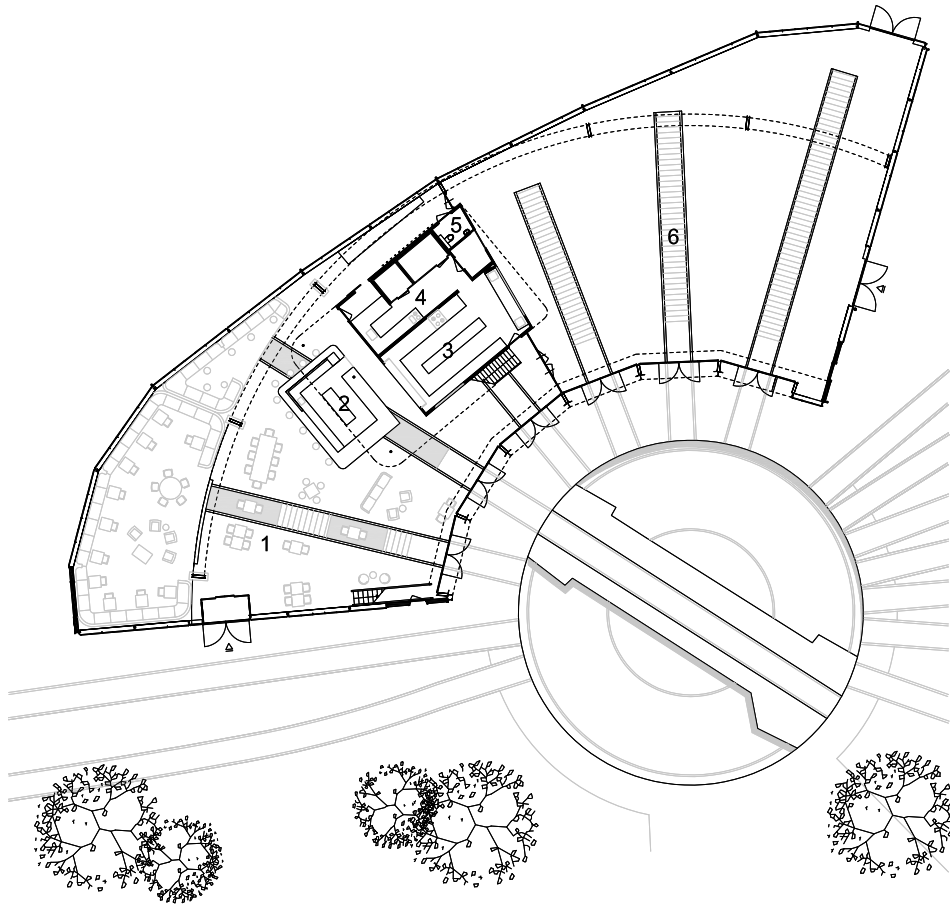


ZECC



zccc

GRAUNDED ARCHITECTURE



- 1 restaurant
- 2 bar
- 3 kitchen
- 4 rinse kitchen
- 5 disabled toilet
- 6 event space
- 7 meeting room
- 8 toilet room
- 9 staff room





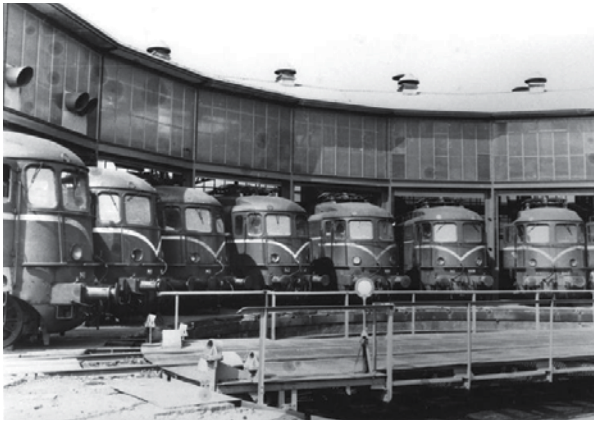
zccc

GROUNDING ARCHITECTURE

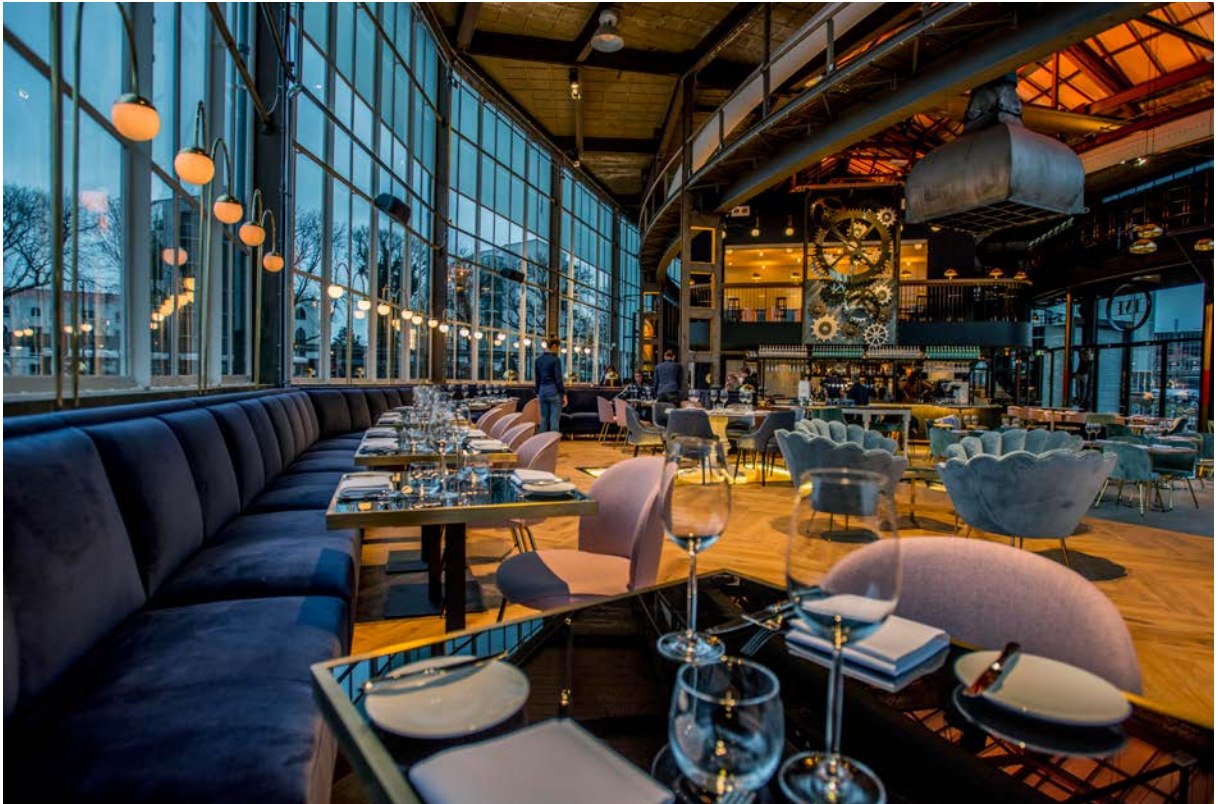
HISTORY OF THE POLYGONAL WORKSHOP

In 1929, the repair shop for locomotives in Tilburg was expanded with an electrically-driven turntable. This made it possible for locomotives to switch tracks in the limited space available. In 1937, the Polygonal Workshop was built. The name of the building refers to the space's polygonal design.

The façades of the sickle-shaped hall were erected in a slender steel structure with glass fronts and a brickwork parapet. Until 2011, the workshop was still in use for the maintenance of trains. Until 2016, the building was temporarily used for artists and events.



zecc



zccc

GROUNDING ARCHITECTURE

RESTORATION AND REDESIGNATION FOR EVE

In 2014, the municipality offered entrepreneurs the chance to come up with a plan to transform the Polygonal Workshop into a culinary meeting place. The plan by EVE (Eten voor Eten) [food-for-food], appealed the most in its realisation of a restaurant, terrace, wine bar, food plaza and city market. Hence this offers support for local products and entrepreneurs and part of the proceeds will go to the World Food Programme.

The ideas were elaborated upon together with BOEi and designed by Zecc. The restoration and redesignation began in 2016. The building has been given a new concrete floor with underfloor heating. The steel structure and thin concrete coffered roof have been restored and preserved. The façade has been fitted with new double glazing (with a putty-look) in the existing steel profiles. At various places, new wall openings have been created that are needed for the building's use. In appearance, these have been implemented in steel so as not to disrupt the coherence of the total image. The design of a huge new canopy at the terrace – as a reference to an originally constructed 'trainwash' – could possibly be implemented in the future.

The turntable still works and can be arranged as a stepped terrace during the summer months. During the conceptualisation this was even called 'the largest sunken patio of the Netherlands'.



zecc



CONTACT INFORMATION

Zecc

Zecc Architecten BV
Tractieweg 41 (Studio A)
3534 AP Utrecht
Nederland
T+31(0)30 273 1289
info@zecc.nl www.zecc.nl

Photographer

StijnStijl photography
www.stijnstijl.nl

Jan van Eijndhoven

The logo for Zecc, featuring the word 'zecc' in a bold, black, sans-serif font. The 'z' is stylized with a white cutout, and the 'c's are also stylized with white cutouts.

GROUND ED ARCHITECTURE